

# Wavecrest® Installation Guide



## Wavecrest Certificate

**Copyright**

Copyright © 1996-2015, Wavecrest Computing, Inc. All rights reserved. Use of this product and this manual is subject to license. Information in this document is subject to change without notice.

904 East New Haven Avenue, Melbourne, FL 32901 USA

[www.wavecrest.net](http://www.wavecrest.net)

**Trademarks**

The following are trademarks, registered trademarks, or service marks of Wavecrest Computing, Inc.: Wavecrest Computing, Inc., CyBlock® App, CyBlock® Appliance, CyBlock® Client, CyBlock® Cloud, CyBlock® ISA, CyBlock® Software, Cyfin®, and OtherWise™. All other trademarks mentioned are the property of their respective owners.

## Downloading the Wavecrest Certificate

The Wavecrest Certificate is downloaded using the product.

1. Depending on your product, type one of the following URLs in the address bar of your browser:

- CyBlock Software - *http://myIPAddress:7999/cert.php*

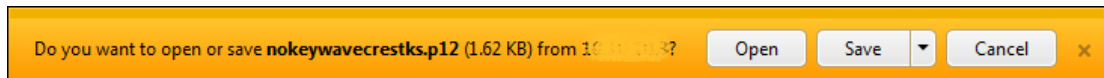
**NOTE:** 7999 is the default port. Your system may be configured differently.

- CyBlock Appliance - *http://myIPAddress/cert.php*
- CyBlock Cloud - *https://cloudServerAddress:9090/cert.php*

2. Press **Enter**.

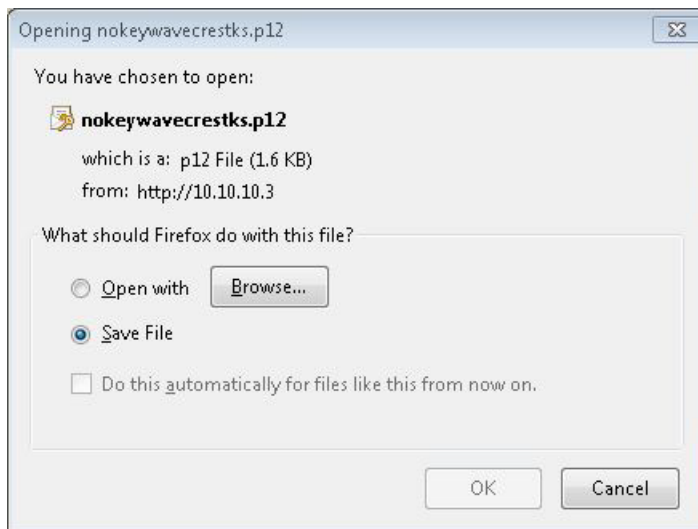
3. Depending on the browser that you are using, the following is displayed:

- In Microsoft Internet Explorer, a message box is displayed at the bottom of the window.



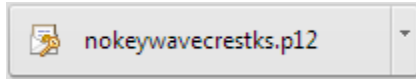
- Click **Save**. A message indicates that the download has completed.
- Click **Open folder** to verify the location of the file. Unless the location was changed previously, it is most likely the default Downloads folder.

- In Mozilla Firefox, a dialog box is displayed.



- Select **Save File**, and click **OK**. A dialog box is displayed allowing you save the file.
- Select the folder in which you want to save the file.
- Click **Save**.

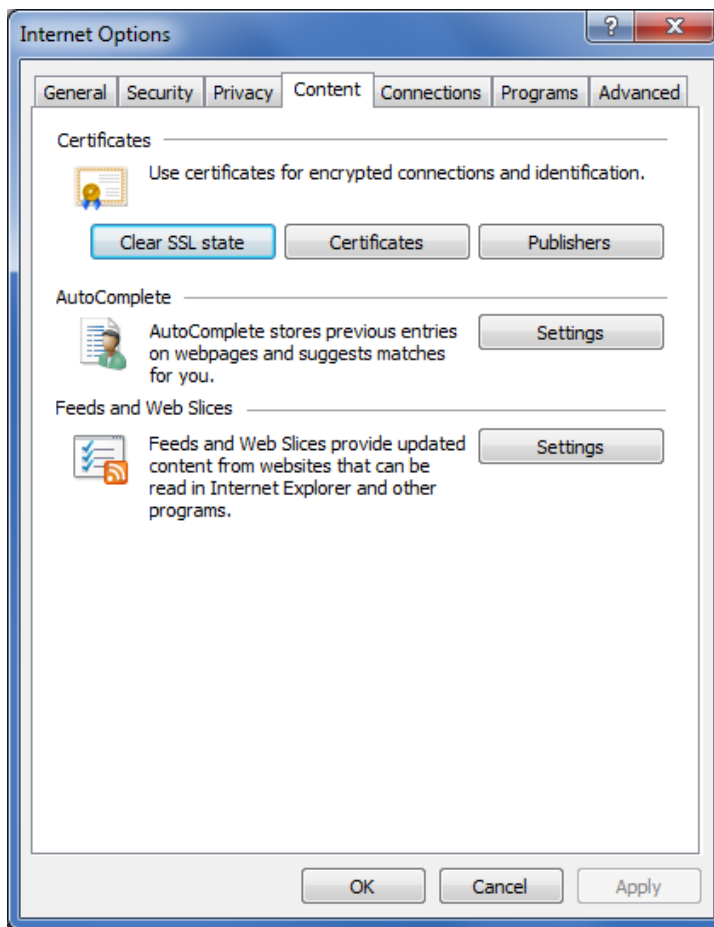
- In Google Chrome, the downloaded file is displayed in the downloads bar at the bottom of the tab.



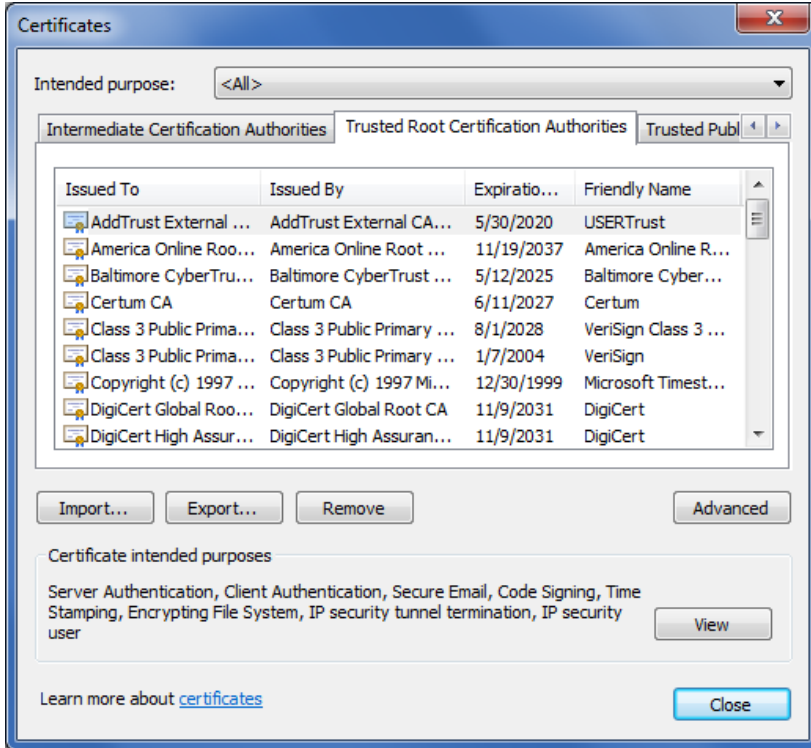
- The certificate file is saved to the default Downloads folder on your computer.
4. Note the location of the downloaded file as it will be needed when installing the Wavecrest Certificate.

## Installing the Wavecrest Certificate Using Microsoft Internet Explorer 11

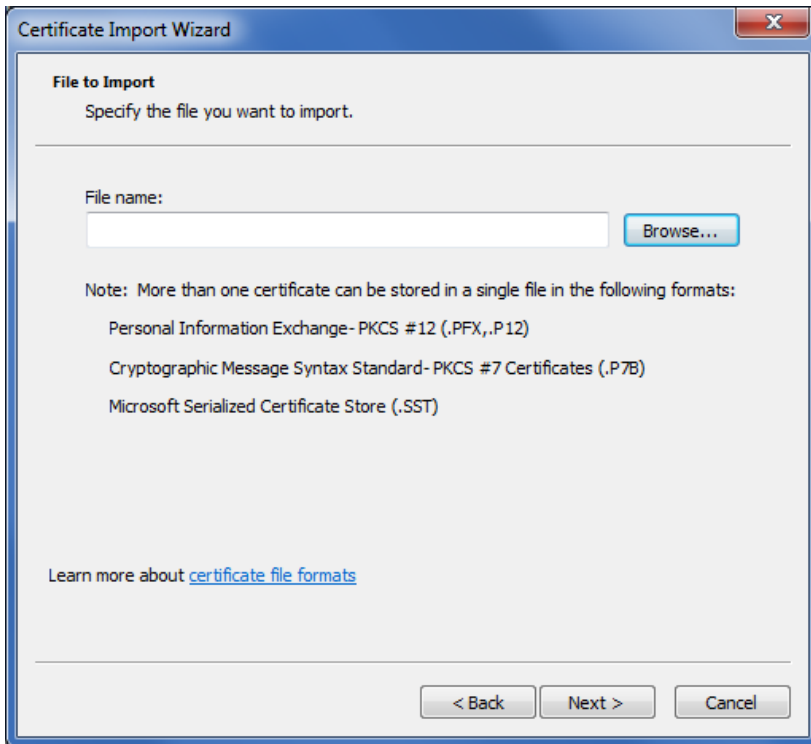
1. In the Command bar from the Tools menu, select Internet options.
2. Click the **Content** tab.



3. Click **Certificates** and then click the **Trusted Root Certification Authorities** tab.

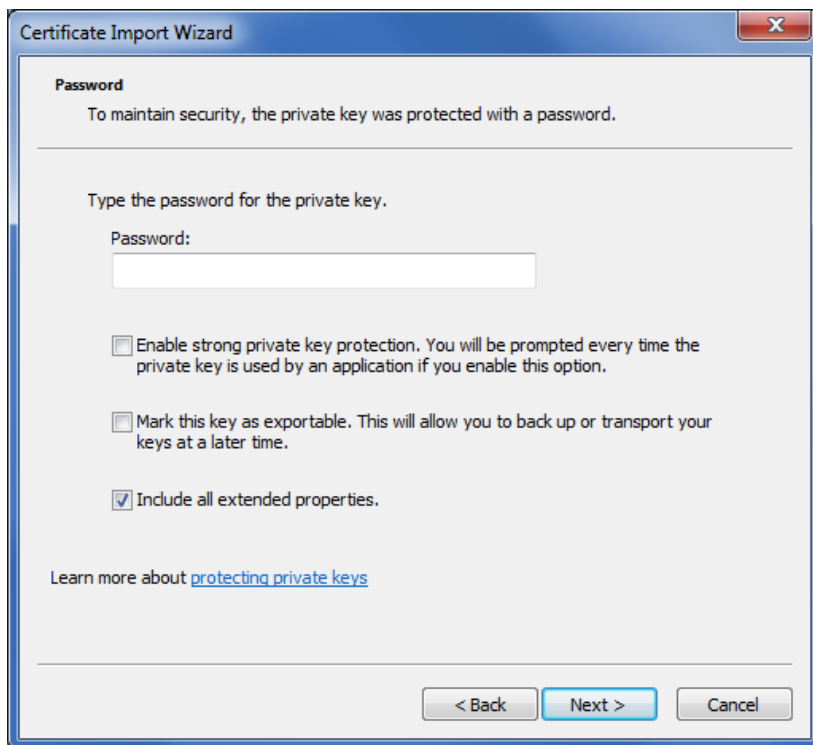


4. Click **Import**. The Welcome to the Certificate Import Wizard dialog box is displayed.
5. Click **Next**. The File to Import dialog box is displayed.

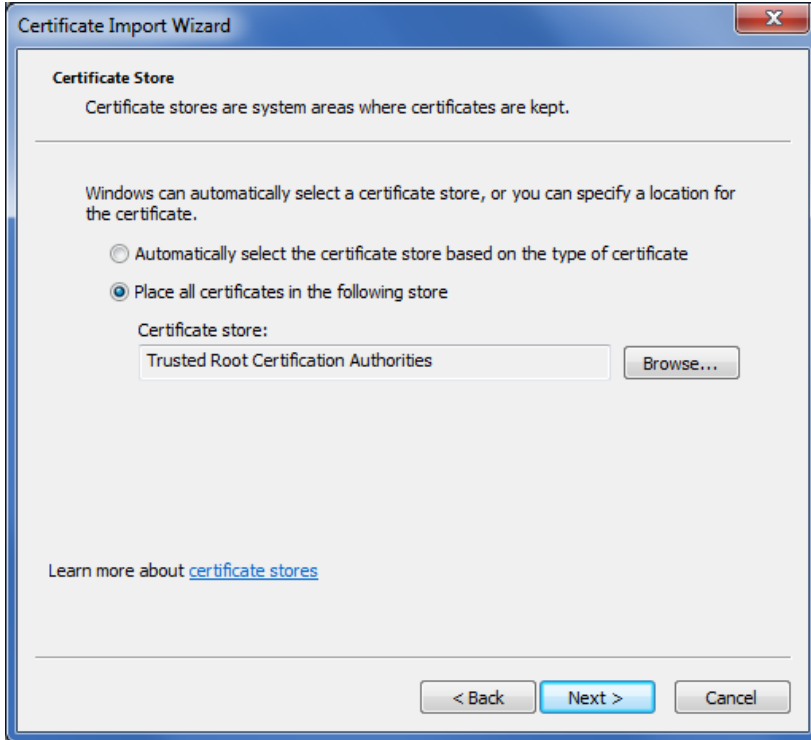


6. Click **Browse** to locate the downloaded certificate file. An Open dialog box is displayed.
7. Select "Personal Information Exchange" for the file type, and locate and select the file.

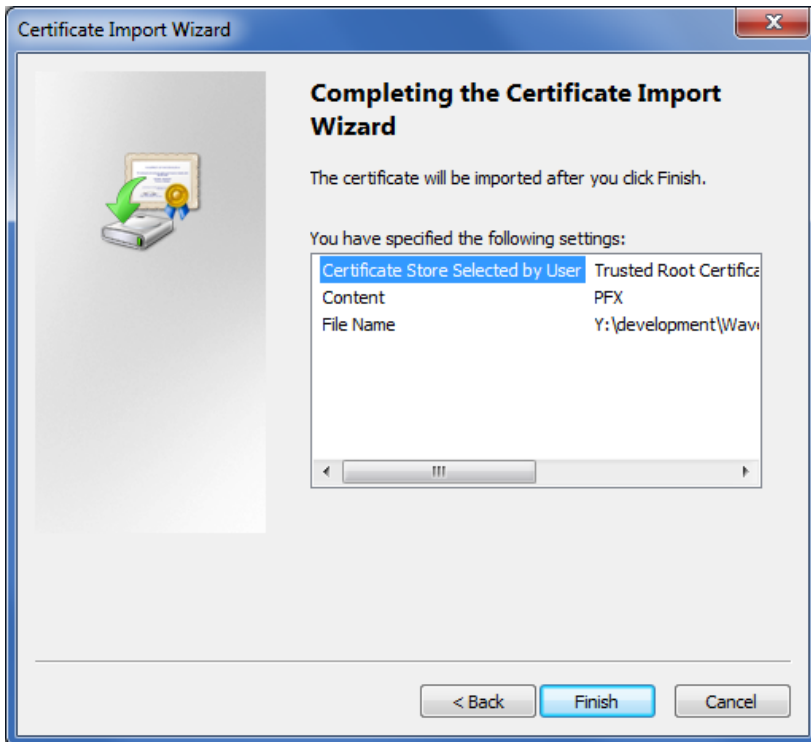
8. Click **Open**. The File to Import dialog box displays the **File name** field populated with the path of the certificate file.
9. Click **Next**. The Password dialog box is displayed.



10. In the **Password** field, type the following:  
`3Nks!V$w`
11. Select the **Include all extended properties** check box.
12. Click **Next**. The Certificate Store dialog box is displayed.



13. Select the **Place all certificates in the following store** option, and click **Browse** to select "Trusted Root Certification Authorities." Click **OK**.
14. Click **Next**. The Completing the Certificate Import Wizard dialog box is displayed.

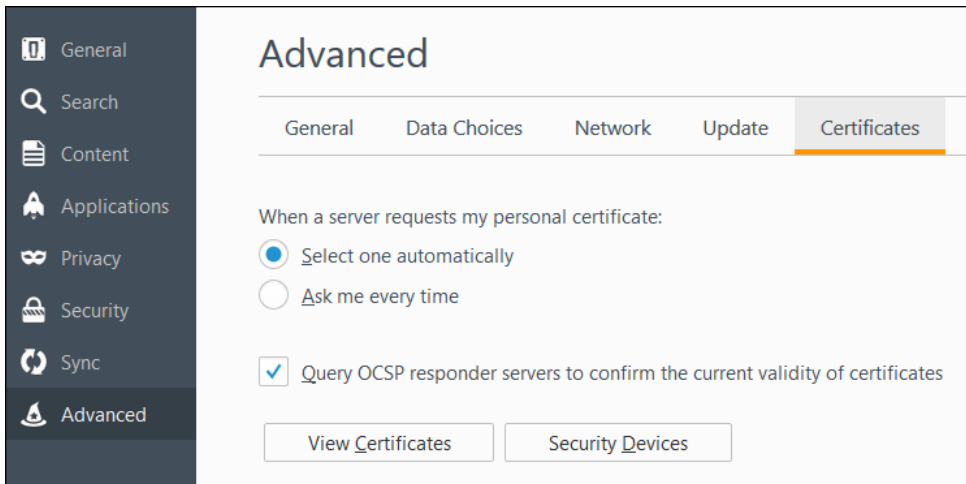


15. Click **Finish**. A Security Warning dialog box is displayed.

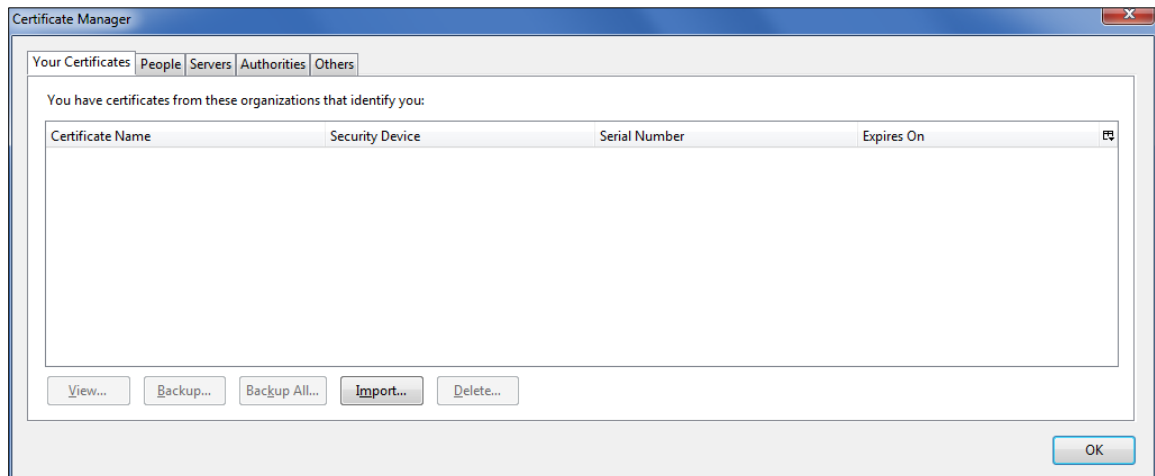
16. Click **Yes** to install the certificate. A dialog box is displayed indicating that the import was successful.
17. Click **OK**. The Wavecrest Computing certificate is listed in the Trusted Root Certification Authorities tab.
18. Click **Close** to close the Certificates dialog box.
19. Click **OK** to close the Internet Options dialog box.

## Installing the Wavecrest Certificate Using Mozilla Firefox 38

1. From the Firefox menu, click **Options**.
2. Click the **Advanced** panel and then the **Certificates** tab.



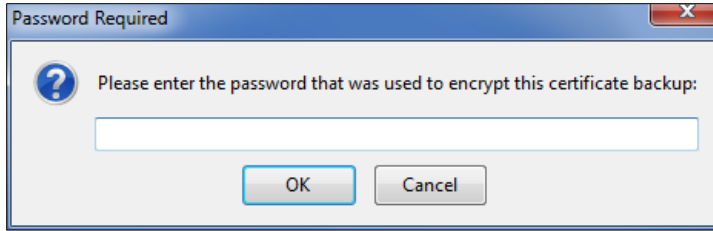
3. Click **View Certificates**. The Certificate Manager dialog box is displayed.
4. Click the **Your Certificates** tab.



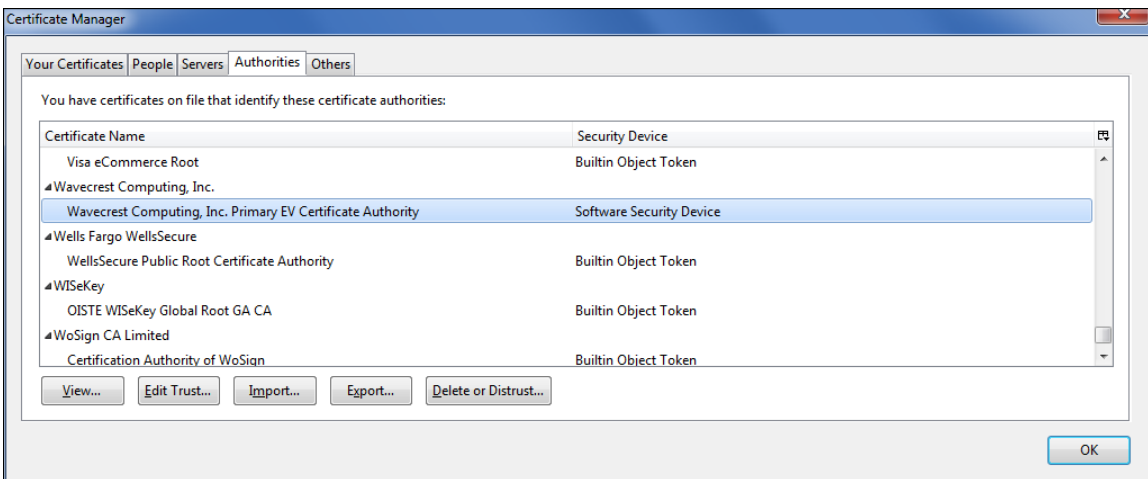
5. On the Your Certificates tab, click **Import**. The Certificate File to Import dialog box is displayed.
6. Locate and select the file, and click **Open**. The Password Required dialog box is displayed.



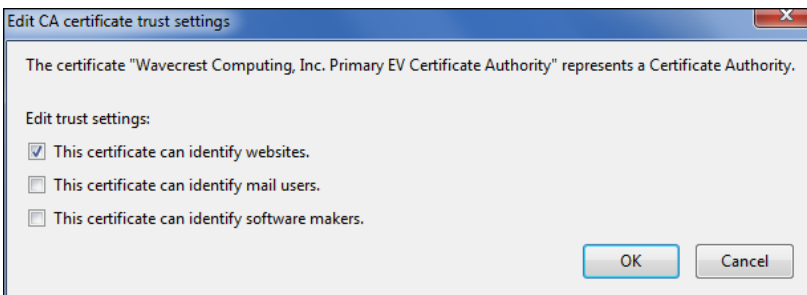
## Wavecrest Certificate Installation Guide



7. In the password field, type the following:  
`3Nks!V$w`
8. Click **OK**. A dialog box is displayed indicating that your security certificate and private key were successfully restored.
9. Click **OK**.
10. On the Authorities tab, scroll down the list of certificates, and select the "Wavecrest Computing, Inc. Primary EV Certificate Authority" entry.



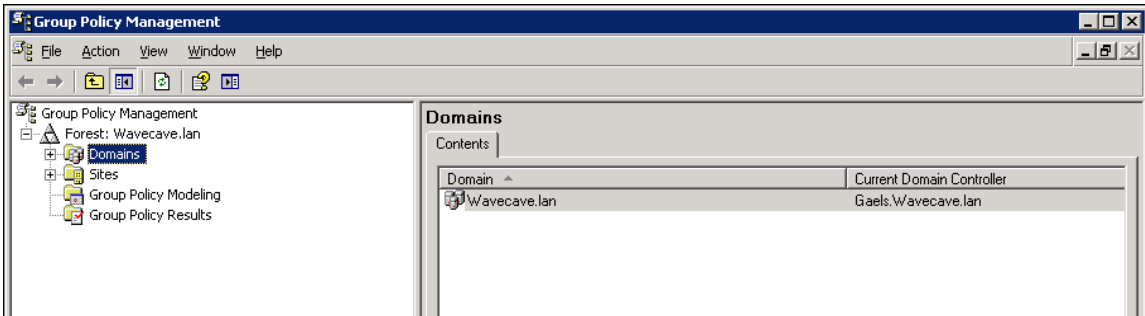
11. Click **Edit Trust**. The Edit CA certificate trust settings dialog box is displayed.



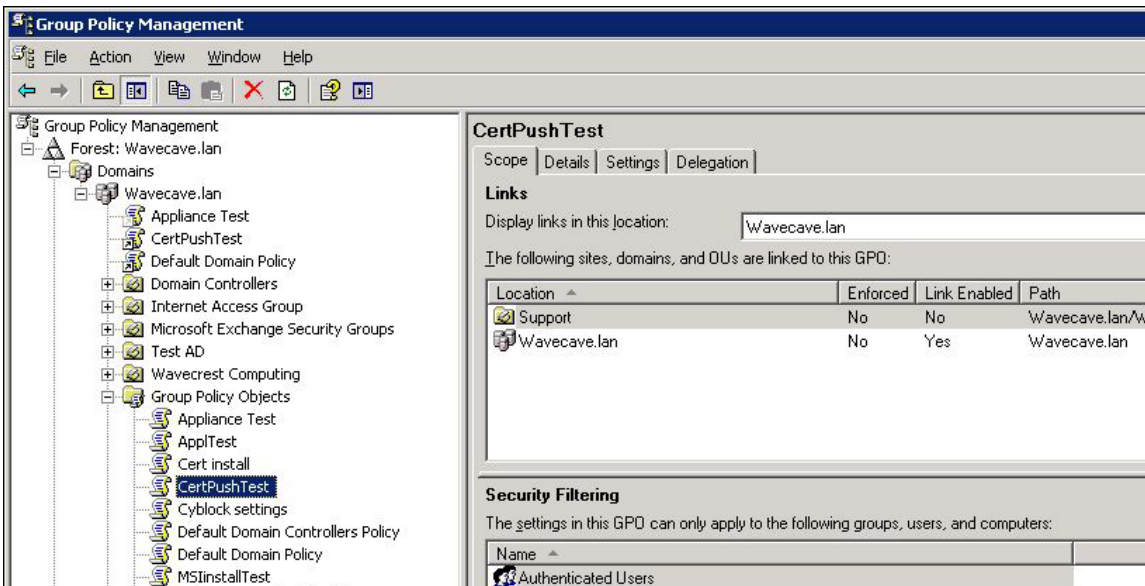
12. Select **This certificate can identify websites.** and click **OK**.
13. Click **OK** to close the Certificate Manager dialog box.
14. Close the Options tab in Firefox.

## Importing the Wavecrest Certificate Using Active Directory

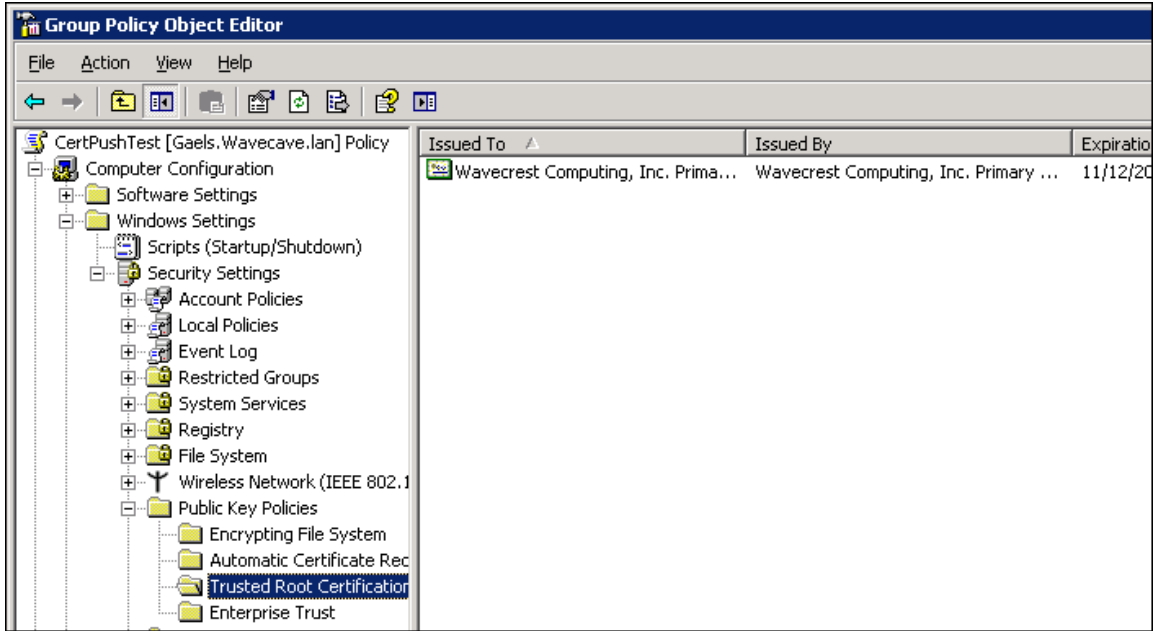
1. On the Active Directory server, from the Start menu, select Administrative Tools and then Group Policy Management.



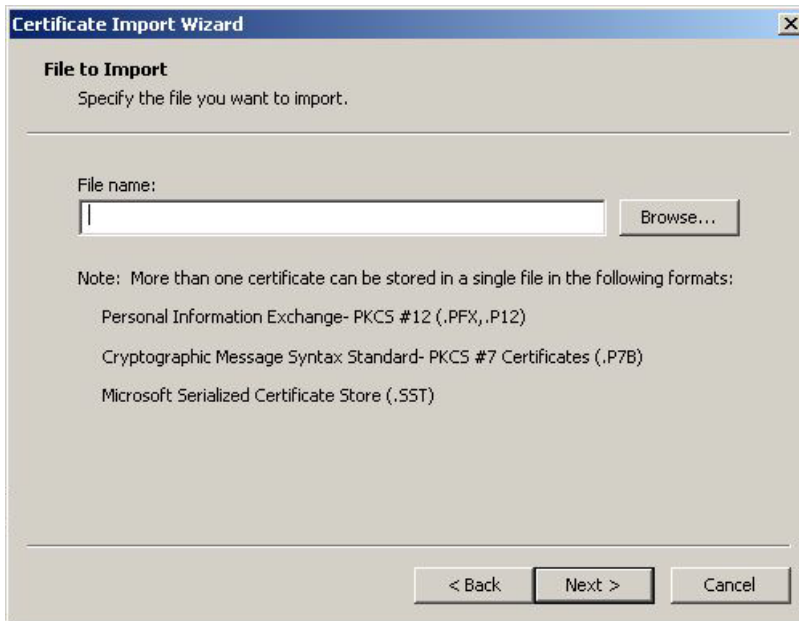
2. Double-click the **Domains** folder, your domain name, and the **Group Policy Objects** folder.



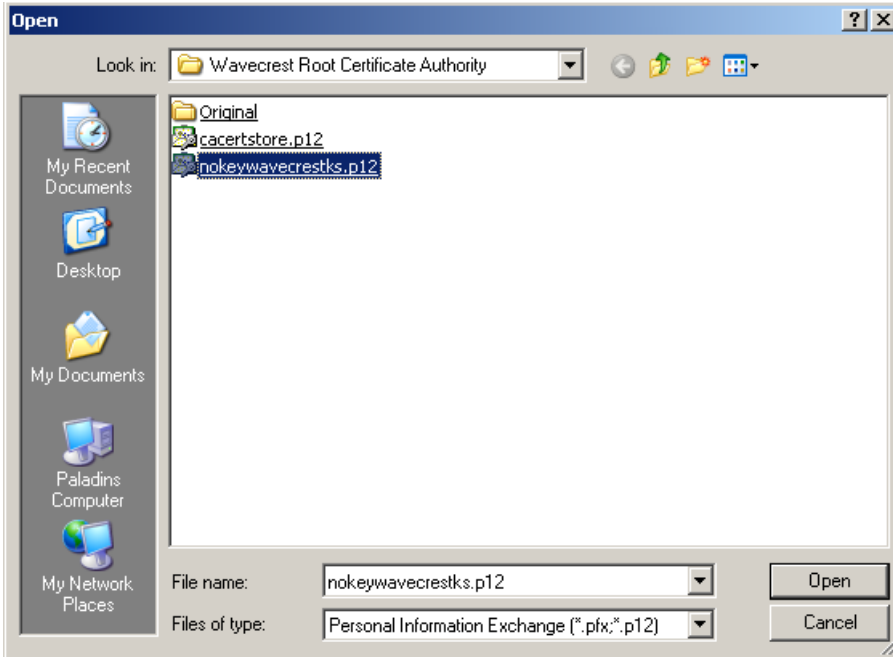
3. Right-click your Group Policy object (e.g., CertPushTest) and select Edit. The Group Policy Object Editor is displayed.



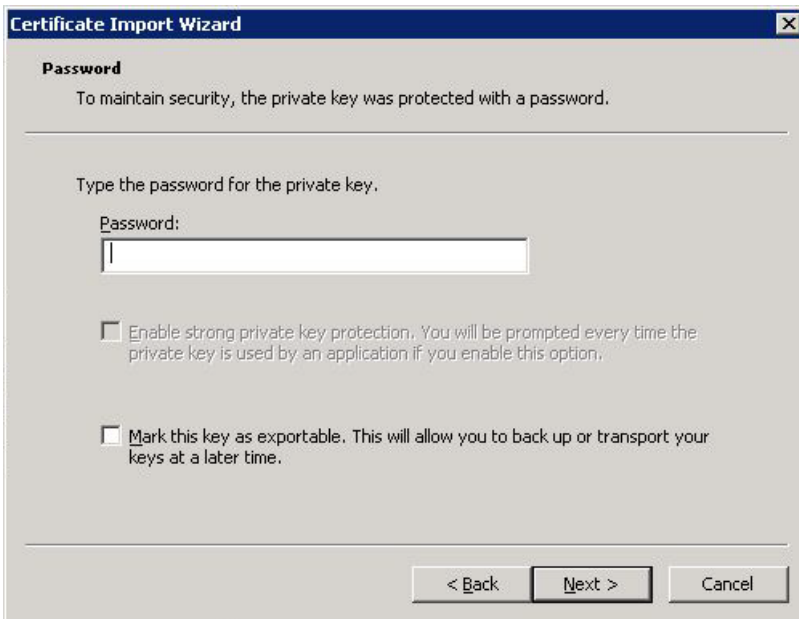
4. Under your Group Policy object, double-click **Computer Configuration**, **Windows Settings**, **Security Settings**, and then **Public Key Policies**.
5. Right-click **Trusted Root Certification Authorities**, select All Tasks and then Import. The Welcome to the Certificate Import Wizard dialog box is displayed.
6. Click **Next**. The File to Import dialog box is displayed.



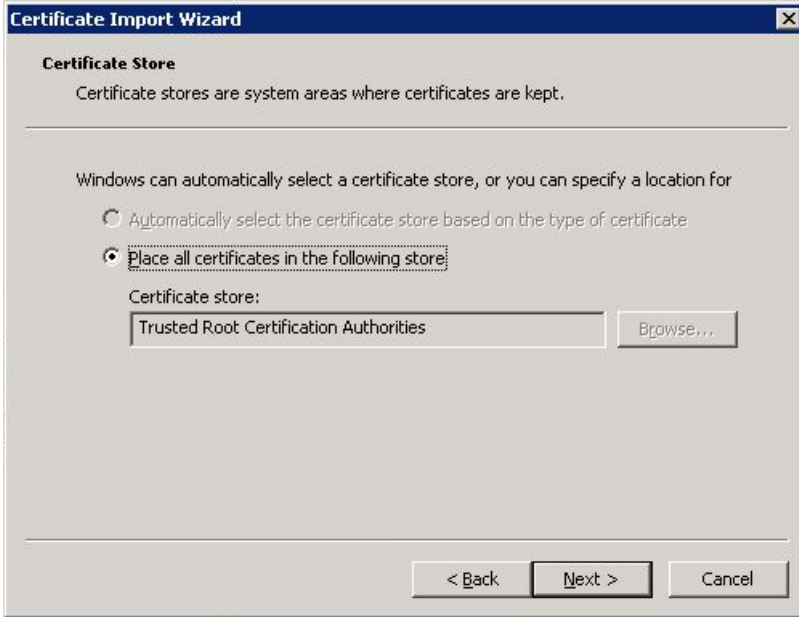
7. Click **Browse** to locate the downloaded certificate file. An Open dialog box is displayed.



8. Select "Personal Information Exchange" for the file type, and locate and select the file.
9. Click **Open**. The File to Import dialog box displays the **File name** field populated with the path of the certificate file.
10. Click **Next**. The Password dialog box is displayed.



11. In the **Password** field, type the following:  
*3Nks!V\$w*
12. Click **Next**. The Certificate Store dialog box is displayed.



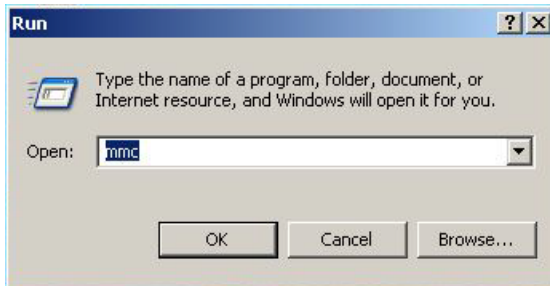
13. The **Place all certificates in the following store** option is selected by default, and the **Certificate store** field is populated with “Trusted Root Certification Authorities.”
14. Click **Next**. The Completing the Certificate Import Wizard dialog box is displayed.



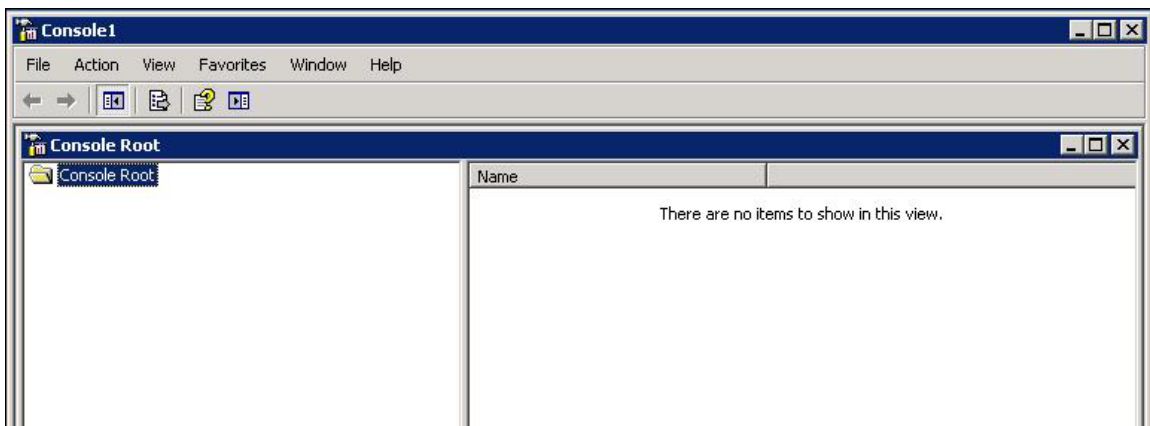
15. Click **Finish**. A dialog box is displayed indicating that the import was successful.
16. Click **OK**. The Wavecrest Computing certificate is listed in the Group Policy Object Editor.

## Installing the Wavecrest Certificate in Windows XP Professional

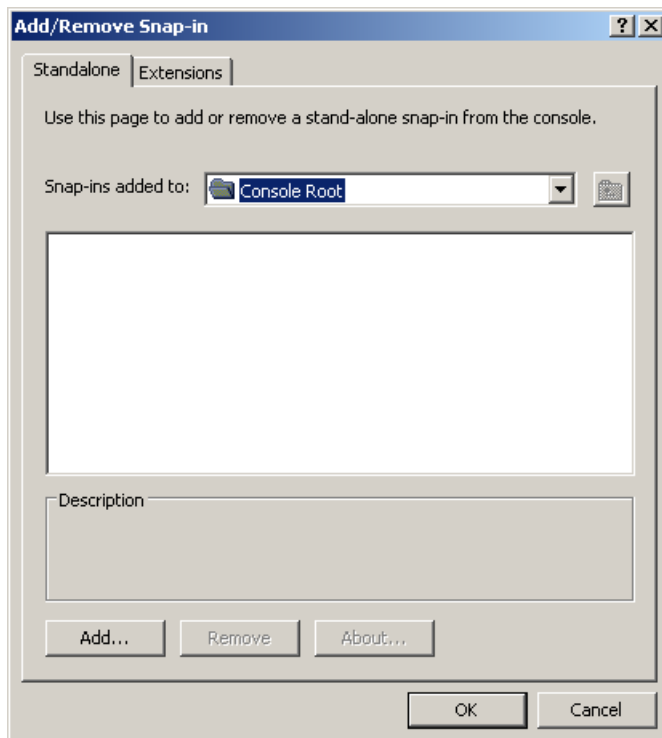
1. From the Start menu, select Run. The Run dialog box is displayed.



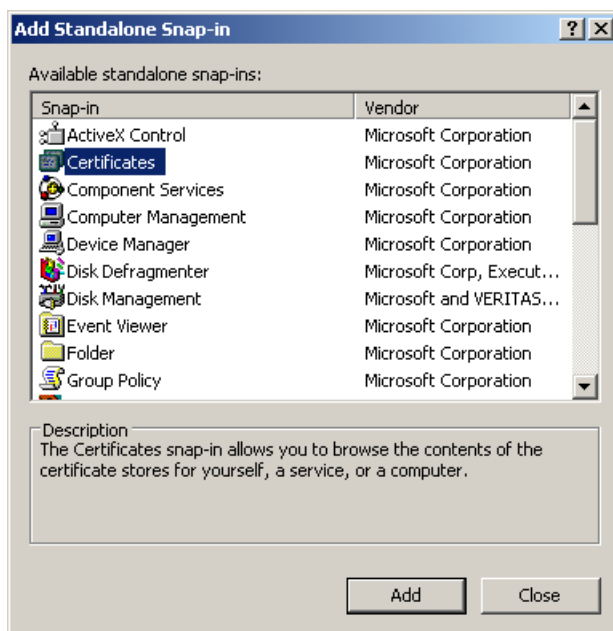
2. Type *mmc* and click **OK**. The Console window is displayed.



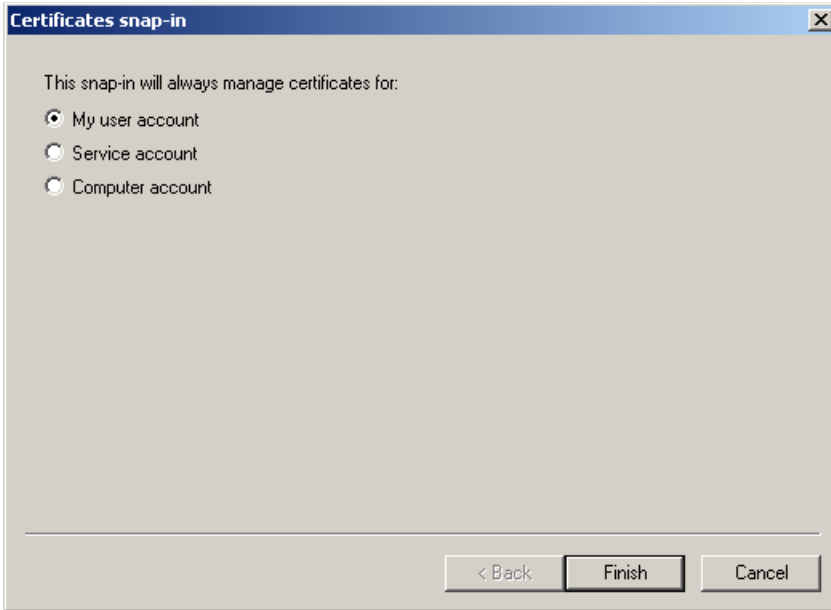
3. From the File menu, select Add/Remove Snap-in. The Add/Remove Snap-in dialog box is displayed.



4. In the **Snap-ins added to** field, ensure that “Console Root” is displayed.
5. Click **Add**. The Add Standalone Snap-in dialog box is displayed.



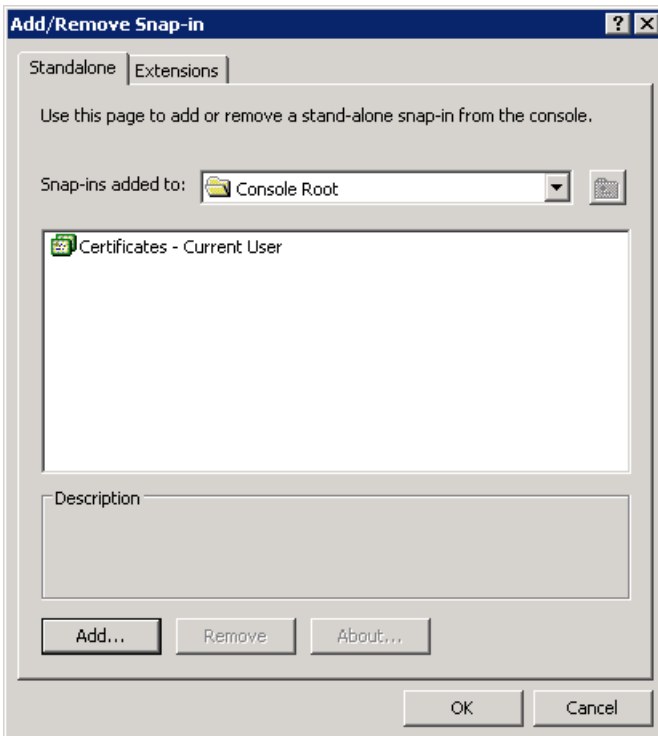
6. Select **Certificates** and click **Add**. The Certificates snap-in dialog box is displayed.



7. Select **My user account** and click **Finish**. The Add Standalone Snap-in dialog box is displayed.

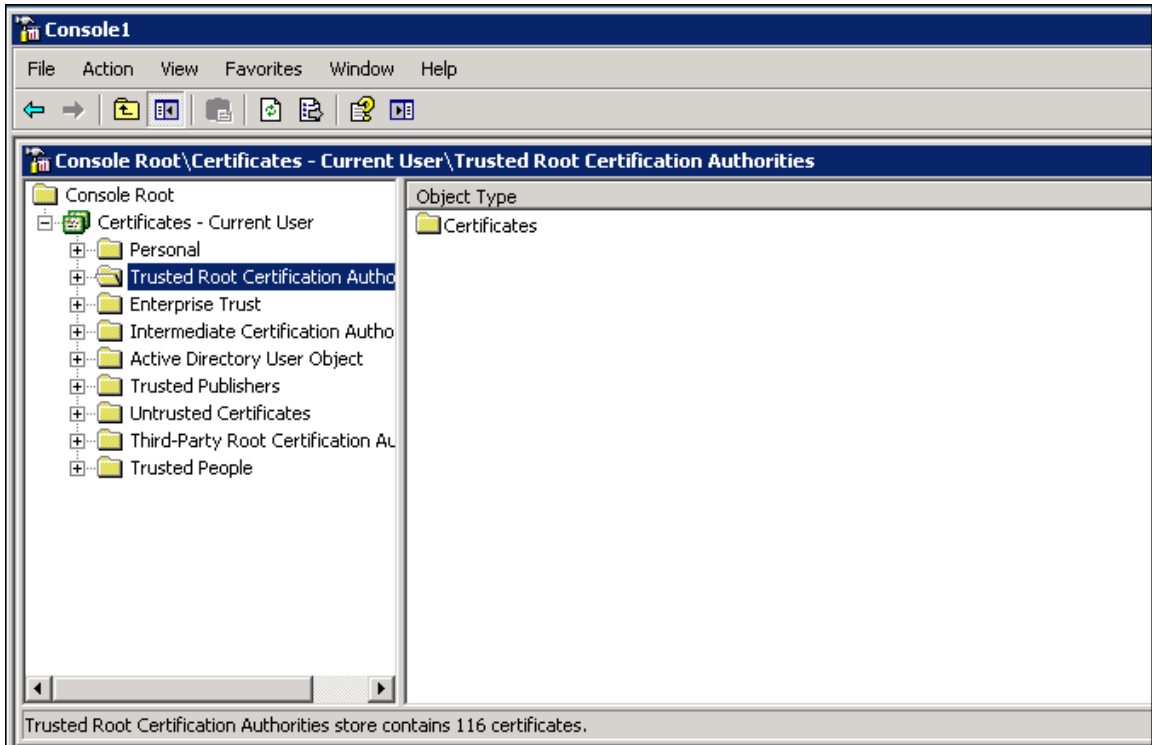
**NOTE:** You may select the **Computer account** option to manage the certificate for the computer account for all users.

8. Click **Close**. **Certificates - Current User** is displayed in the Add/Remove Snap-in dialog box.

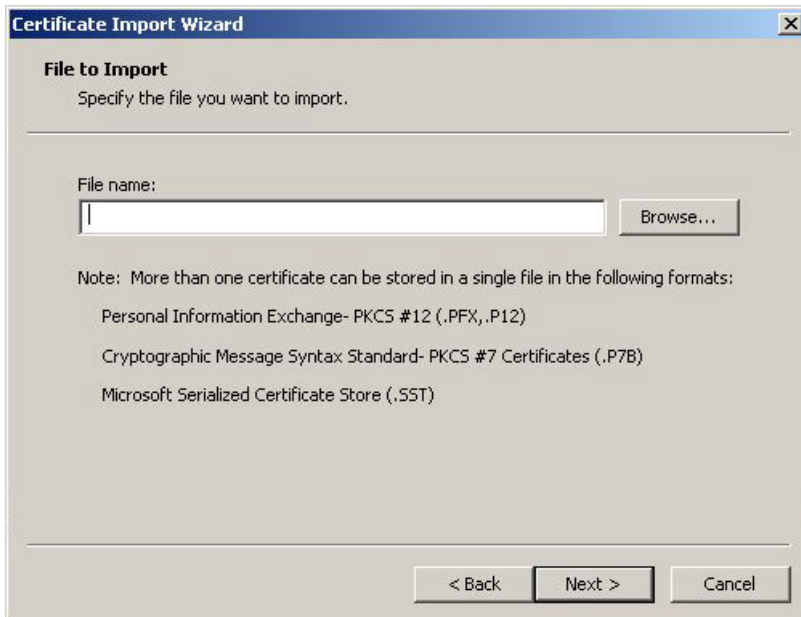


9. Click **OK**.
10. In the Console window, double-click the **Certificates - Current User** folder.

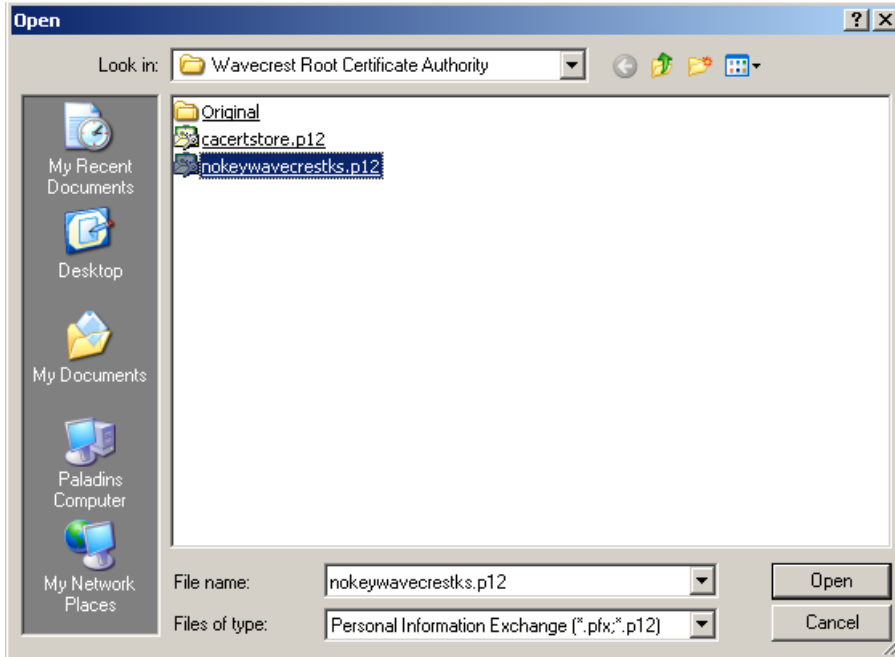




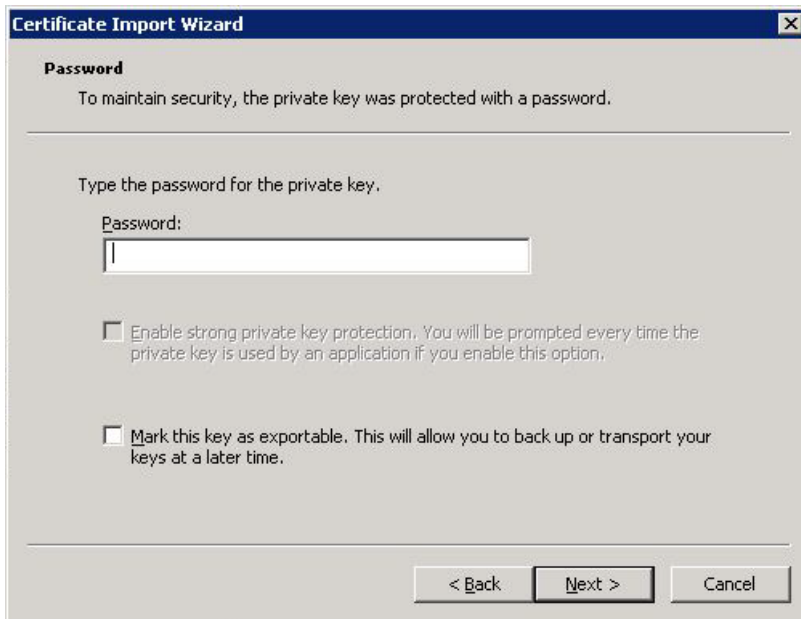
11. Right-click **Trusted Root Certification Authorities**, and select All Tasks and then Import. The Welcome to the Certificate Import Wizard dialog box is displayed.
12. Click **Next**. The File to Import dialog box is displayed.



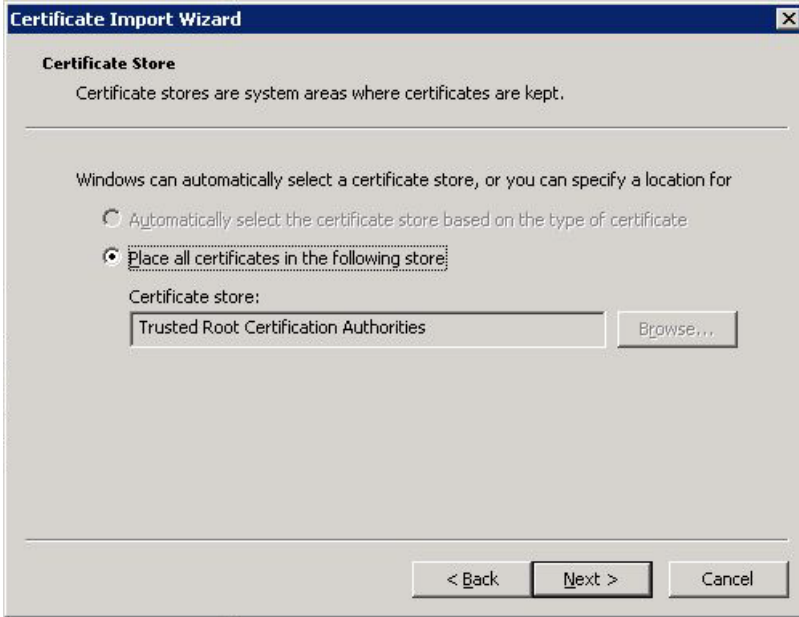
13. Click **Browse** to locate the downloaded certificate file. An Open dialog box is displayed.



14. Select "Personal Information Exchange" for the file type, and locate and select the file.
15. Click **Open**. The File to Import dialog box displays the **File name** field populated with the path of the certificate file.
16. Click **Next**. The Password dialog box is displayed.



17. In the **Password** field, type the following:  
*3Nks!V\$w*
18. Click **Next**. The Certificate Store dialog box is displayed.



19. The **Place all certificates in the following store** option is selected by default, and the **Certificate store** field is populated with “Trusted Root Certification Authorities.”
20. Click **Next**. The Completing the Certificate Import Wizard dialog box is displayed.



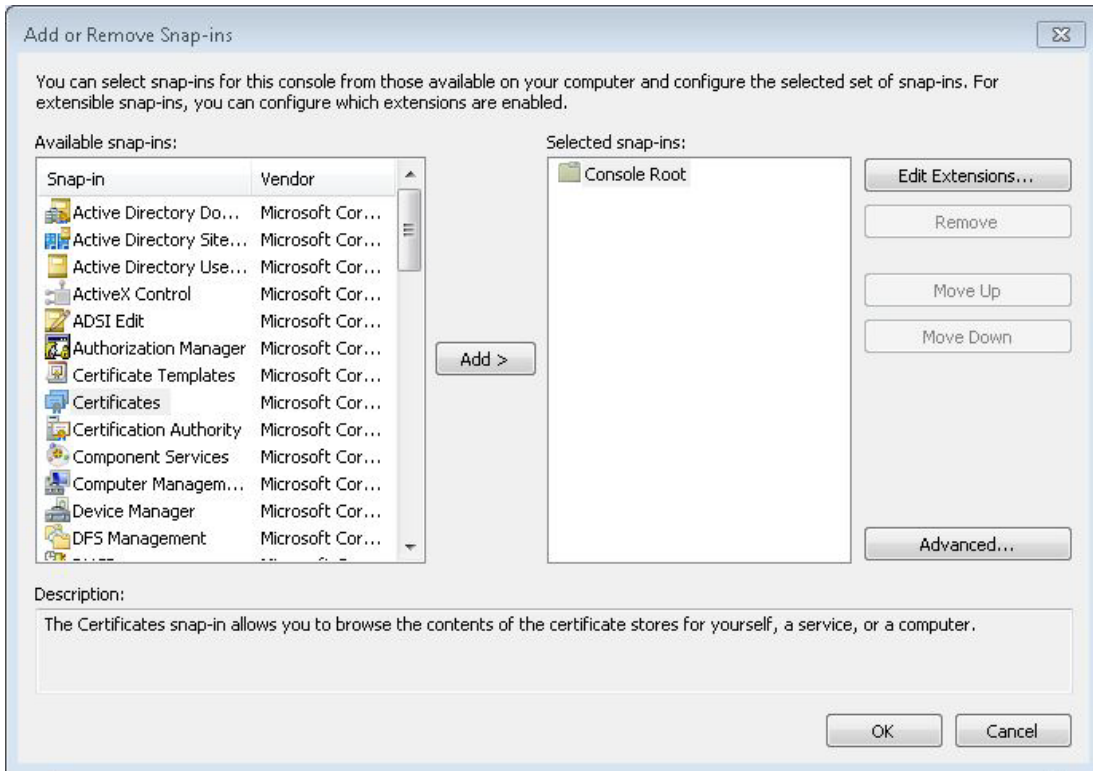
21. Click **Finish**. A Security Warning dialog box is displayed.
22. Click **Yes** to install the certificate. A dialog box is displayed indicating that the import was successful.
23. Click **OK**. The Wavecrest Computing certificate is listed in the Trusted Root Certification Authorities, Certificates folder.

## Installing the Wavecrest Certificate in Windows 7 Professional/Enterprise

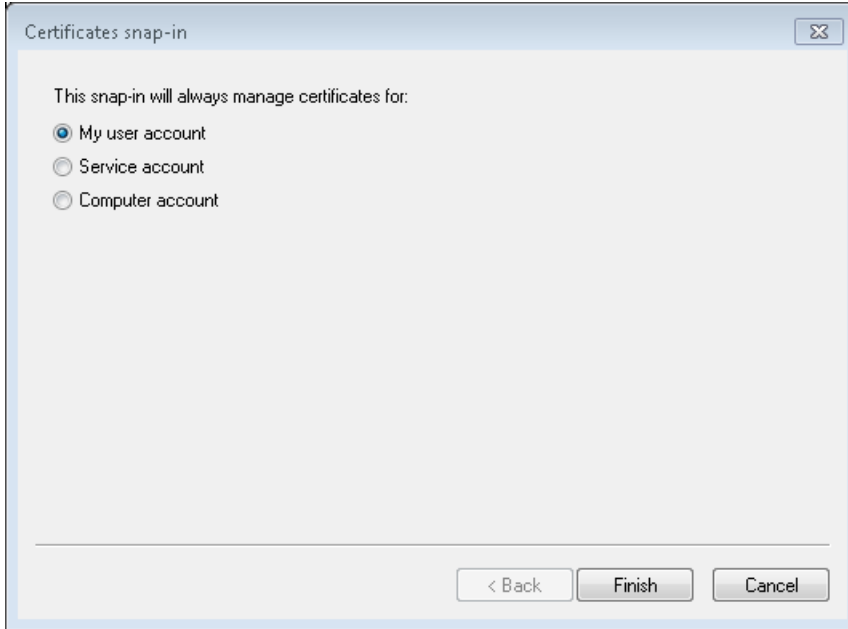
1. From the Start menu, type *mmc* in the search box, and press **Enter**. The Console window is displayed.



2. From the File menu, select Add/Remove Snap-in. The Add or Remove Snap-ins dialog box is displayed.

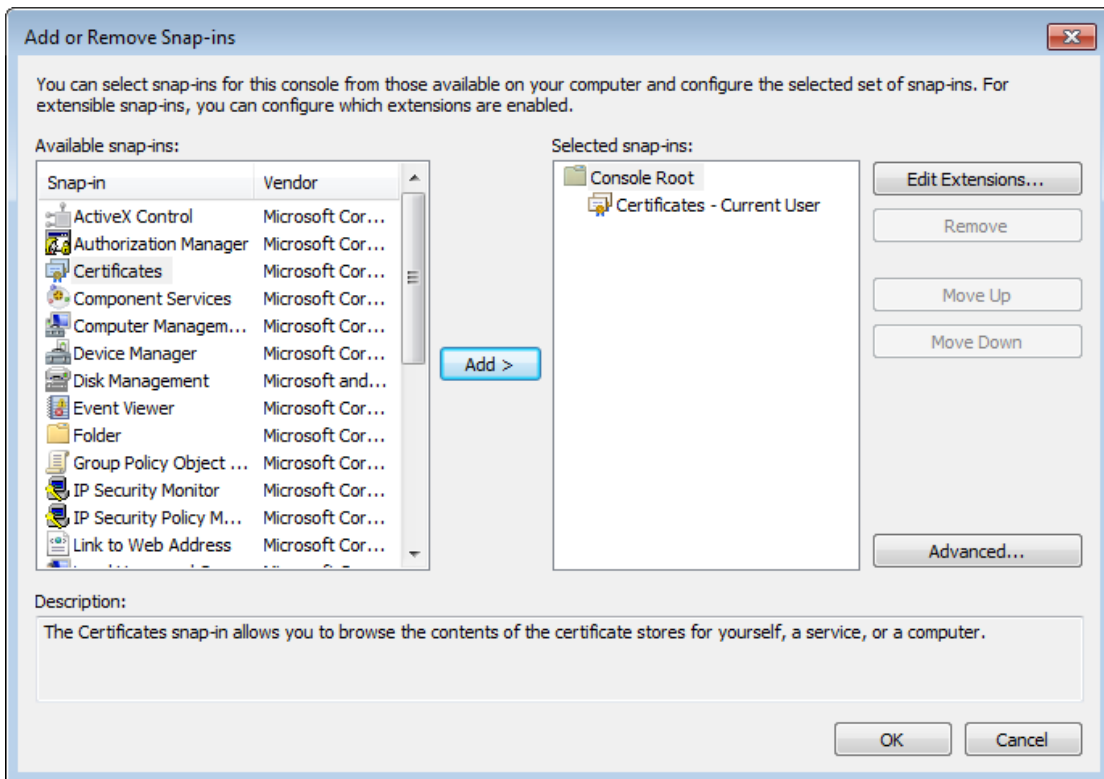


3. Under **Available snap-ins**, select **Certificates** and click **Add**. The Certificates snap-in dialog box is displayed.

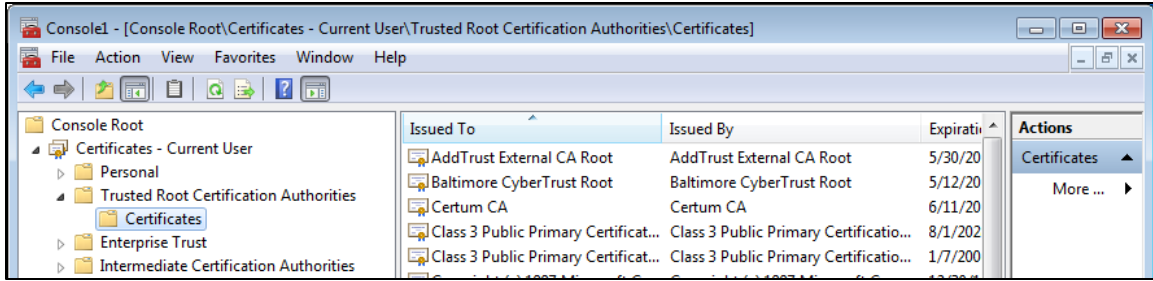


4. Select **My user account** and click **Finish**. **Certificates - Current User** is displayed under **Selected snap-ins** in the Add or Remove Snap-ins dialog box.

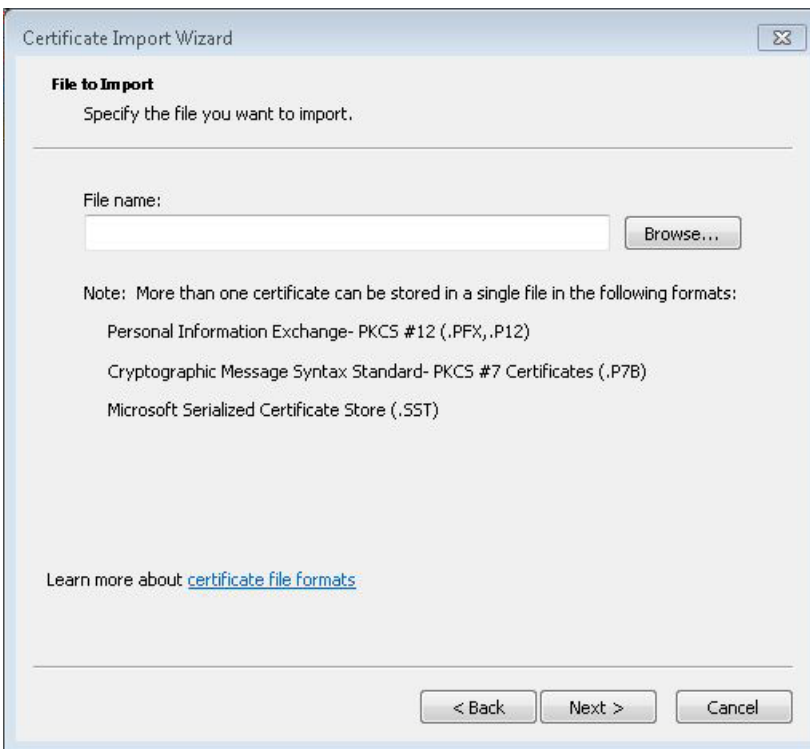
**NOTE:** You may select the **Computer account** option to manage the certificate for the computer account for all users.



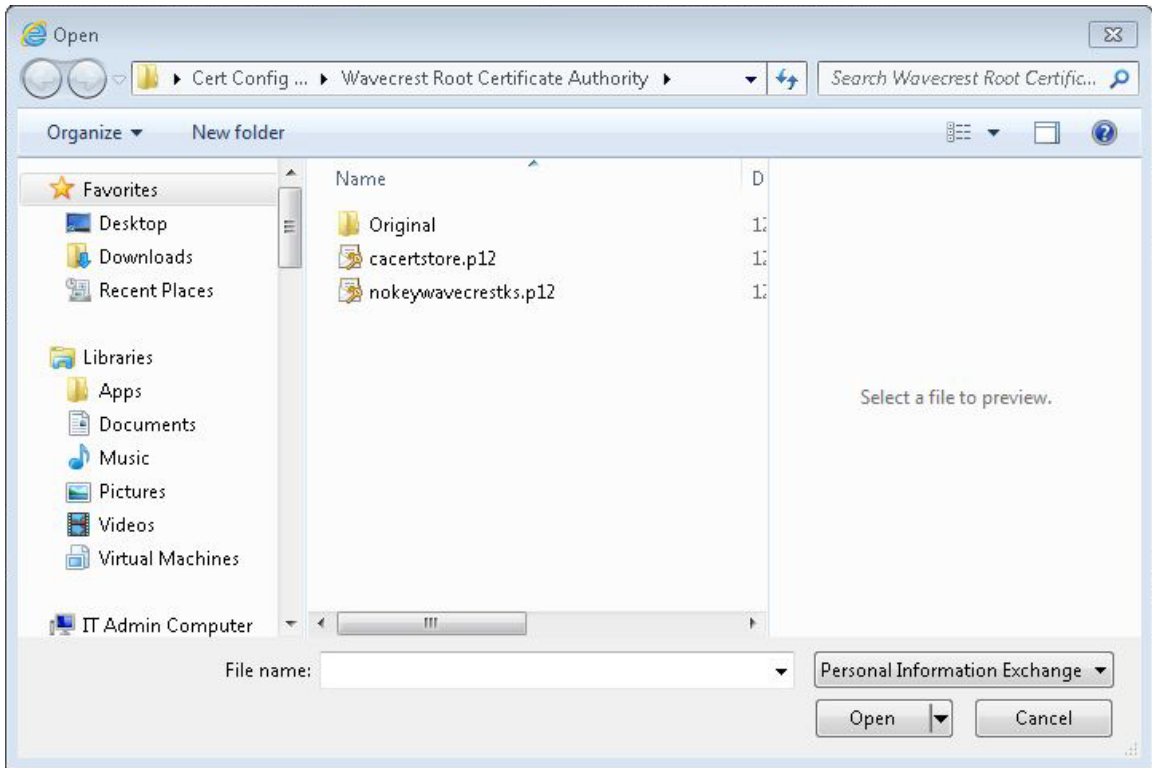
5. Click **OK**. **Certificates - Current User** is displayed in the **Console Root** folder.



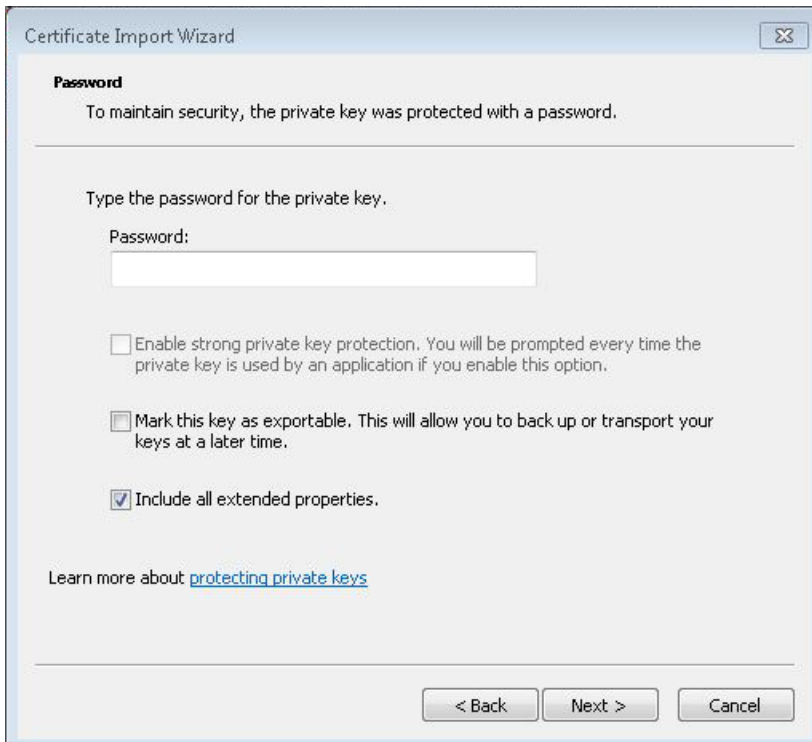
6. Double-click **Certificates - Current User** and then **Trusted Root Certification Authorities**.
7. Right-click **Certificates**, and select All Tasks and then Import. The Welcome to the Certificate Import Wizard dialog box is displayed.
8. Click **Next**. The File to Import dialog box is displayed.



9. Click **Browse** to locate the downloaded certificate file. An Open dialog box is displayed.



10. Select "Personal Information Exchange" for the file type, and locate and select the file.
11. Click **Open**. The File to Import dialog box displays the **File name** field populated with the path of the certificate file.
12. Click **Next**. The Password dialog box is displayed.

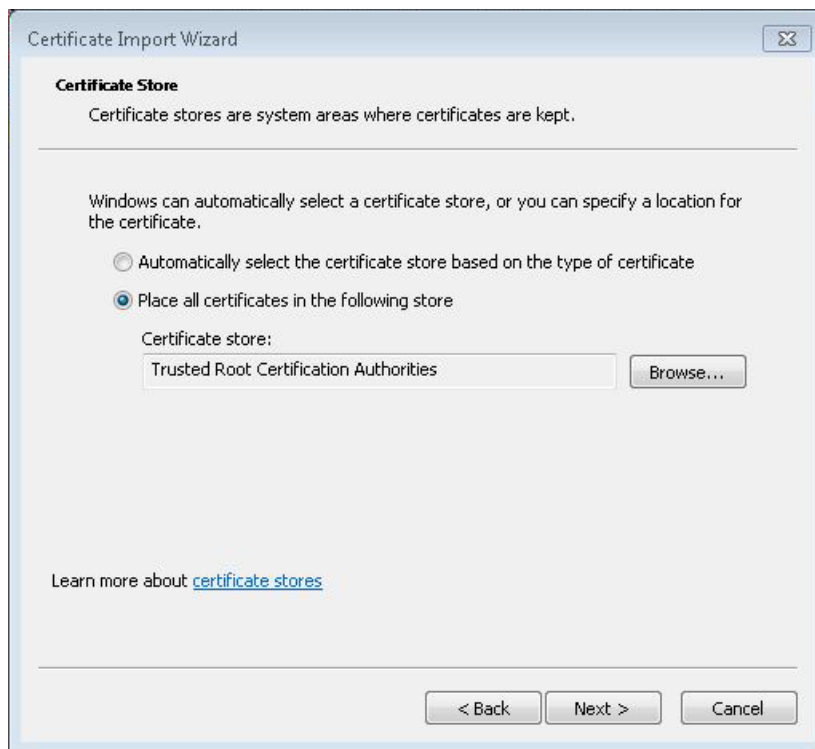


13. In the **Password** field, type the following:

3Nks!V\$w

14. Select the **Include all extended properties** check box.

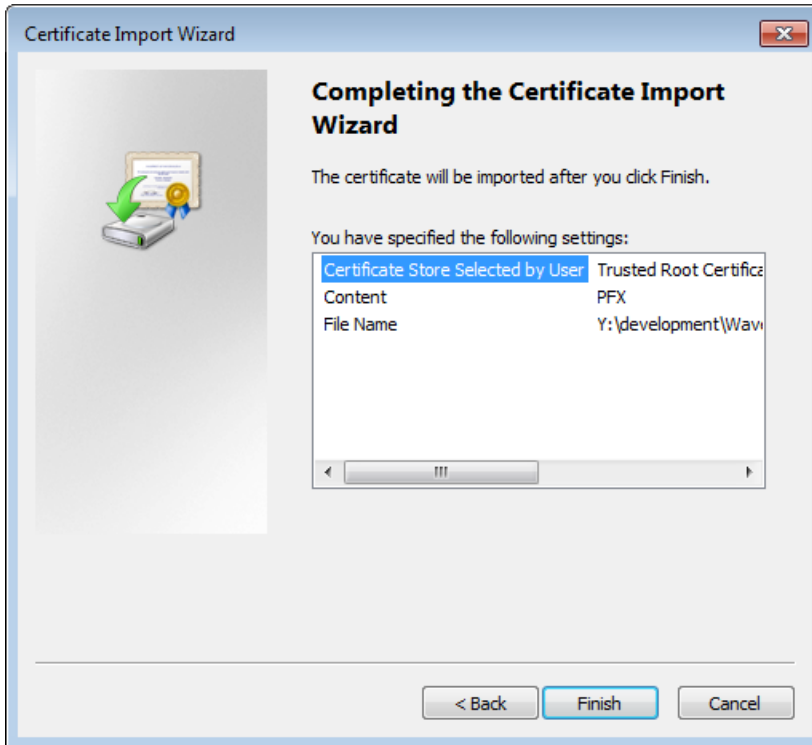
15. Click **Next**. The Certificate Store dialog box is displayed.



16. The **Place all certificates in the following store** option is selected by default, and the **Certificate store** field is populated with “Trusted Root Certification Authorities.”

17. Click **Next**. The Completing the Certificate Import Wizard dialog box is displayed.





18. Click **Finish**. A Security Warning dialog box is displayed.
19. Click **Yes** to install the certificate. A dialog box is displayed indicating that the import was successful.
20. Click **OK**. The Wavecrest Computing certificate is listed in the Trusted Root Certification Authorities, Certificates folder.

## SSL Inspection

Now that you have installed the Wavecrest Certificate, you may proceed to use the SSL Inspection screen in the product.

**NOTE:** By enabling SSL Inspection, applications using HTTPS communication and not utilizing Windows Certificate Stores for certificate validation may encounter errors. Contact Technical Support for assistance at (321) 953-5351, Ext. 4 or [support@wavecrest.net](mailto:support@wavecrest.net).



**WAVECREST**  
C O M P U T I N G

**Wavecrest Computing**

904 East New Haven Avenue

Melbourne, FL 32901

toll-free: 877-442-9346

voice: 321-953-5351

fax: 321-953-5350